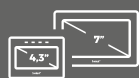
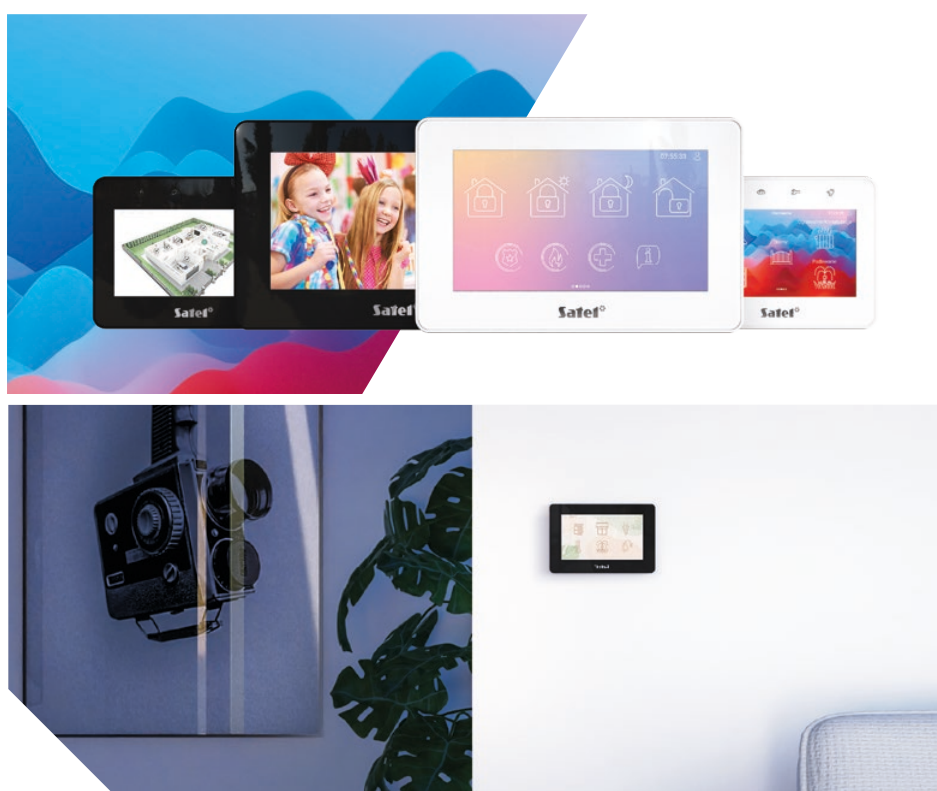


# TOUCHSCREEN KEYPADS

INT-TSH2R, INT-TSG2R



**New level of safety**  
and building automation **control**

## Meet the keypads

# INT-TSH2R INT-TSG2R

The INT-TSH2R and INT-TSG2R devices are dedicated for operation with the INTEGRA, VERSA and PERFECTA 64 M families of control panels. There are additionally equipped with a MIFARE® proximity card reader – used during cooperation with the INTEGRA family control panels.



## Touch and feel the difference

Everyday operation of even complex alarm and building automation systems can be nice and easy. Replace your existing alarm system keypad with the modern touchscreen one.



### easy navigation

multiscreen and multilevel interface simplify the daily system operation



### technology

powerful processor and new software for smooth operation



### built-in card reader

selected models enable the INTEGRA system to be controlled with proximity cards



### gentle touch

capacitive screen for precise touch and swipe gesture support



### colour depth

more than 16 million colours available for high image quality



### your choice

bigger or smaller? choose a 7" or 4.3" screen keypad

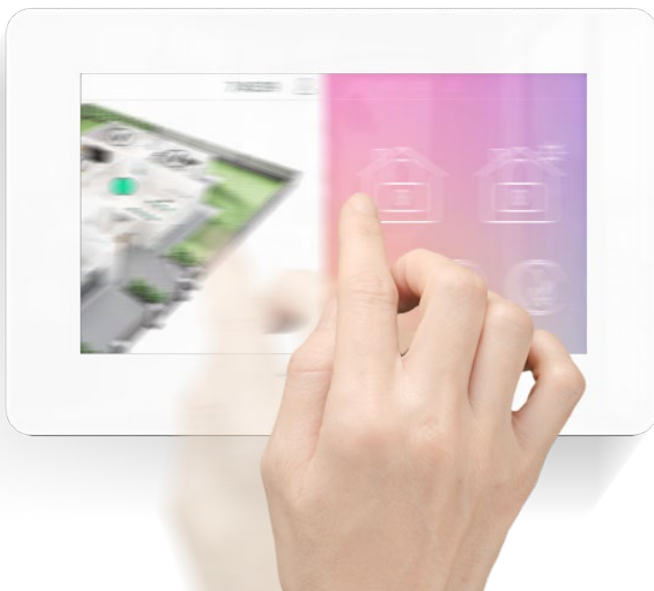


### choose your own style

match the theme and the colour of enclosure to your interior

## Easy navigation

Introducing the device that installers can perfectly adapt to your needs. Multiscreen and multilevel interface allows to build a perfect user-friendly menu, making everyday navigation very convenient. Together with your installer customize the icons and their placement on 24 available screens. You can group icons on each screen by their functions, room they relate to, and more.



## Gentle touch

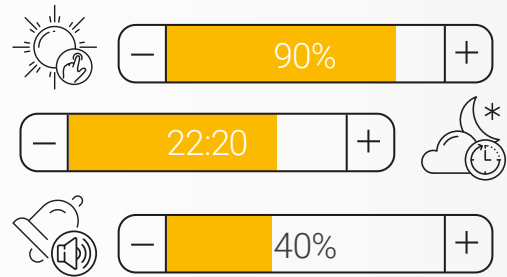
The high sensitivity of the touch panel together with the responsive interface turn the everyday system operation into a real pleasure. With the introduced swipe gestures support, navigating the interface is smooth and most importantly - intuitive.

## Choose your own style

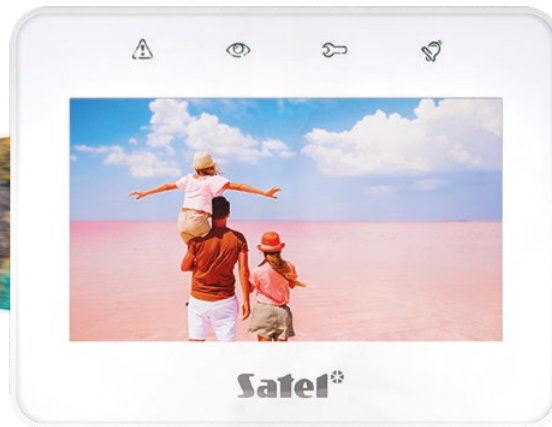
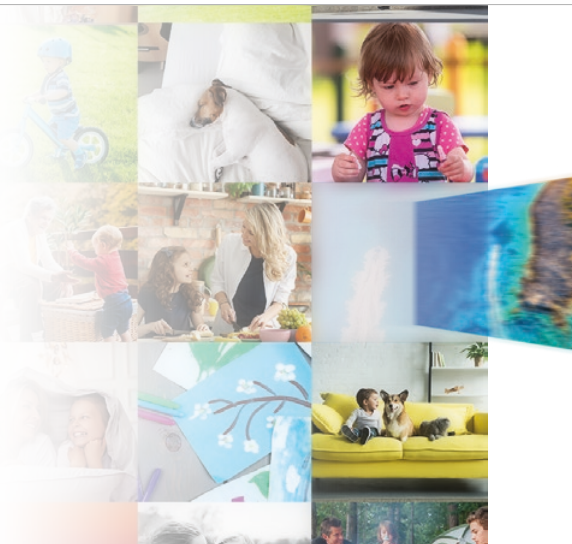
The interface is fully customizable, and allows installers to create dedicated themes with entire colour schemes and custom wallpapers. You can also choose one from over **20 preset themes available**.



The keypads are available in two different colours (modern white and classic black), helping to ideally match them to your room interior.



The screen brightness can be adjusted to match user preference or the day period. You can also set the volume of individual system sounds.

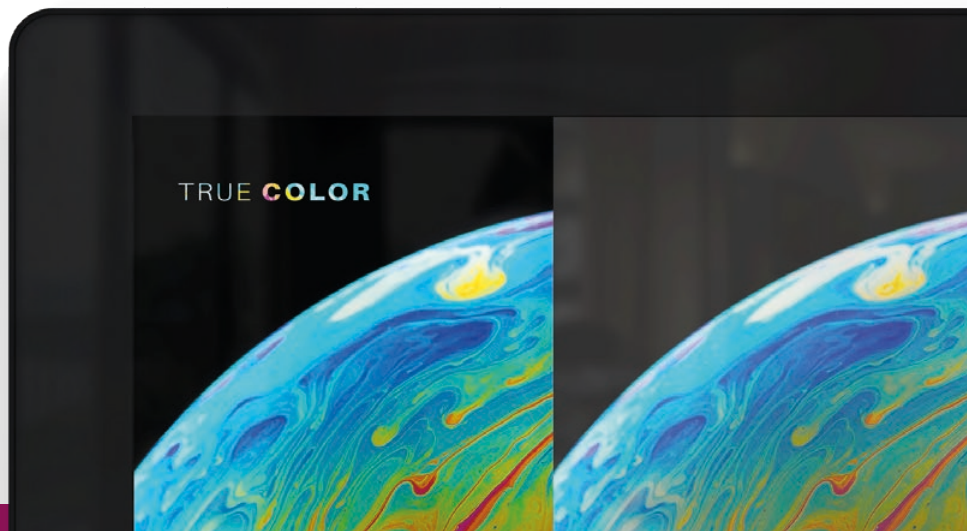


### Photo frame

Decide what the keypad should display when idle: a modern digital clock or perhaps a slide show composed of your favourite photos.

### Colour depth

The INT-TSH2R and INT-TSG2R keypads can display **over 16 million colours** – more than the human eye can distinguish. The high image quality is hidden behind a glass panel that protects the display from scratches.



## Technology

The new generation processor used in the INT-TSH2R keypad is over 2 times<sup>1</sup>, and in INT-TSG2R even 4 times<sup>2</sup> faster than the processor used in previous models. All components have been selected and optimised to ensure efficient operation of even complex systems, including both facility security and building automation functions.

INT-TSH2R

2,6x faster<sup>1</sup>

INT-TSH

INT-TSG2R

4x faster<sup>2</sup>

INT-TSG

<sup>1</sup>compared to INT-TSH

<sup>2</sup>compared to INT-TSG

## Built-in card reader

Conveniently control INTEGRA system functions, e.g. arming, using proximity cards of the safe MIFARE® standard - no longer need to use a password.



## Your choice

The same quality in two different sizes. INT-TSH2R is the bigger 7" touchscreen keypad. INT-TSG2R is the smaller 4"3 touchscreen device. You decide which one suits your needs better.

	INT-TSH2R	INT-TSG2R
<b>Display size</b>	7"	4,3"
<b>Display resolution</b>	1024 x 600	480 x 272
<b>System status notification method</b>	Icons displayed on the taskbar	Backlit icons located on the enclosure
<b>Audio playback</b>	Speaker	Buzzer

## 35 YEARS OF EXPERIENCE

Professional protection of any type of facility as well as people residing in it, using advanced, yet functional and economical solutions - these few words are the shortest way to describe the mission of SATEL, a 100% Polish capital-owned manufacturer of security systems. Thanks to its reliability in business and placing a special focus on high quality and a wide range of products, the SATEL brand has been widely recognized in the industry for 35 years.

This management philosophy and the hard work of more than 360 SATEL employees produce tangible results. An extensive offer, comprising more than 450 products, provides countless possibilities for creating alarm, home automation, fire alarm, access control and monitoring systems tailored to the individual needs of each user. At the same time, these systems meet the requirements of Polish and international regulations and industry standards.

The manufacturer reserves the right to change the specification and technical data of devices. Images shown are for general information only and may differ from actual products. U-TSH2RTSG2R-EN0126

One of SATEL's main objectives is to adapt the functionality of its devices to the current requirements and expectations of the market using the latest technologies. For this reason, the company's own design and production departments are continuously modernised and expanded. As a natural result of all our efforts to manufacture top-quality equipment, a quality management system compliant with ISO 9001 was introduced in 2002. Irrespective of this certification, SATEL also conducts a full functional test of all its products leaving the production line, thus guaranteeing the reliability of the manufactured devices. By focusing on modern design and the highest level of product quality and functionality, SATEL has won many satisfied customers not only in Poland, but also in over 70 markets around the world.